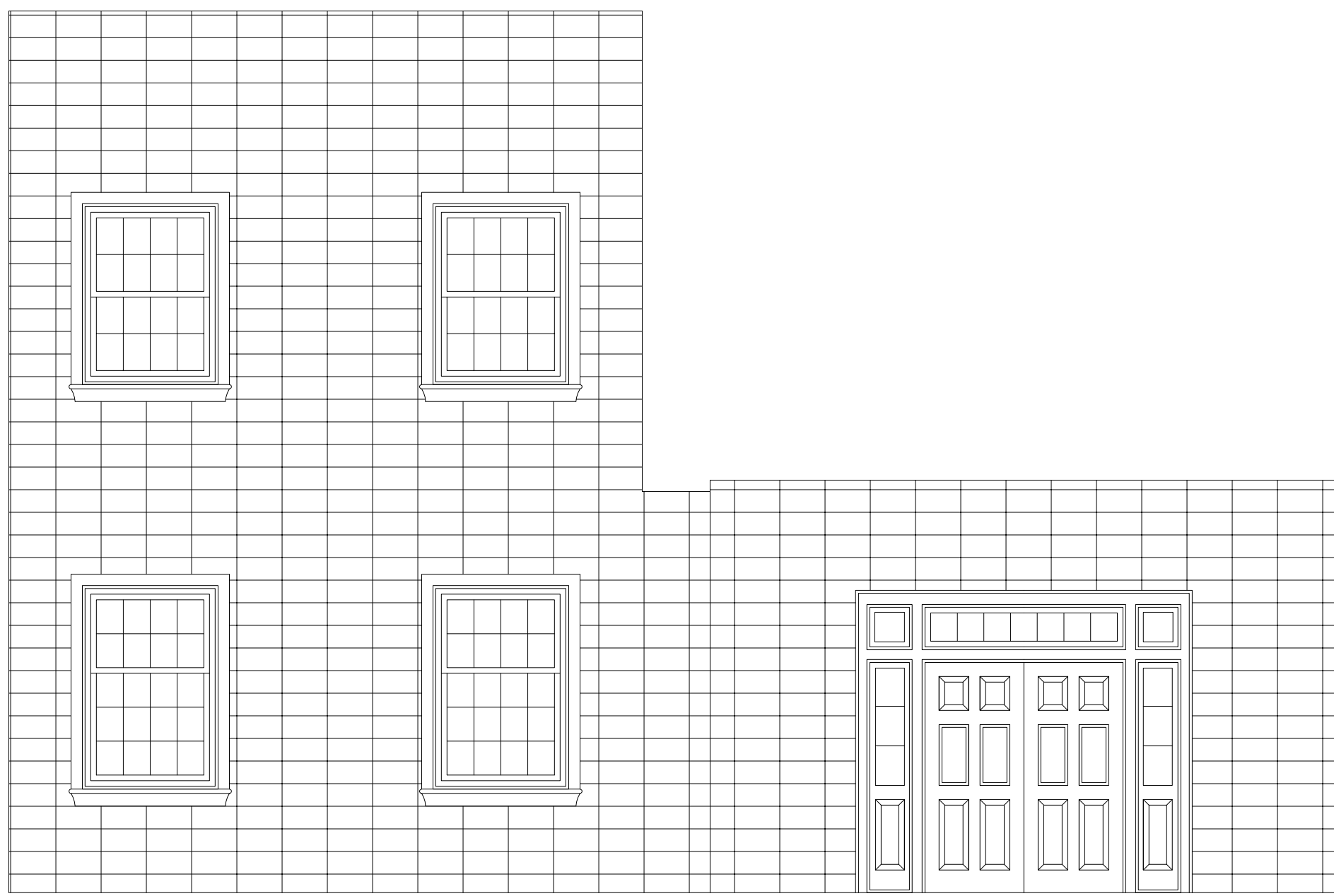


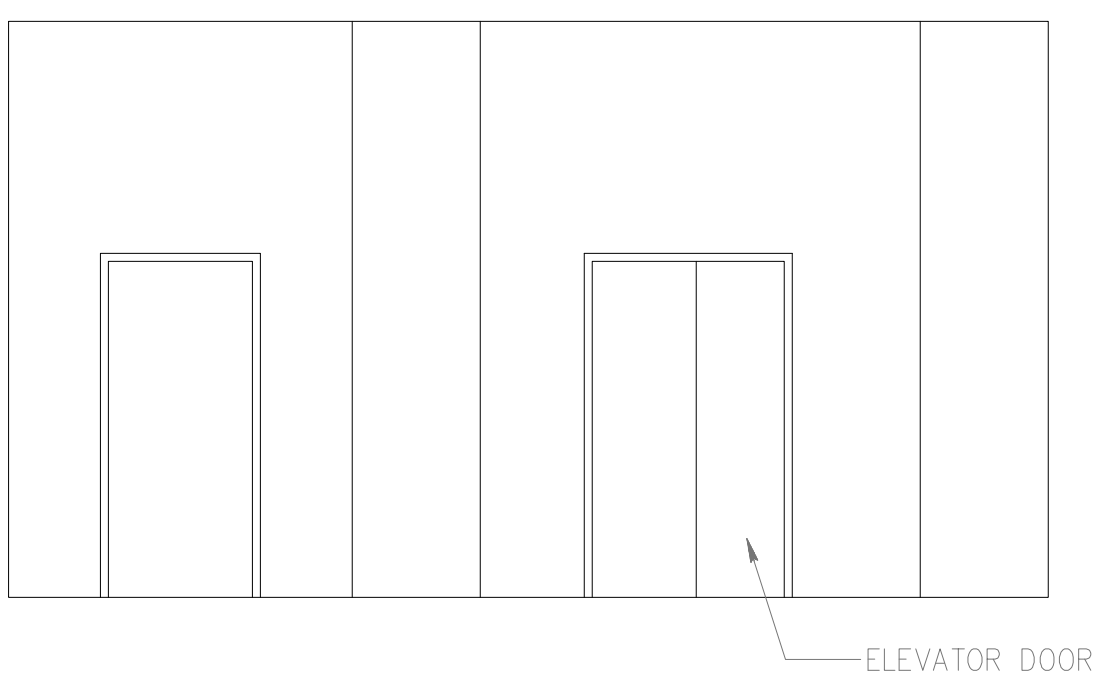
1 LOBBY-VESTIBULE EAST ELEVATION

A26 1/4" = 1'-0"



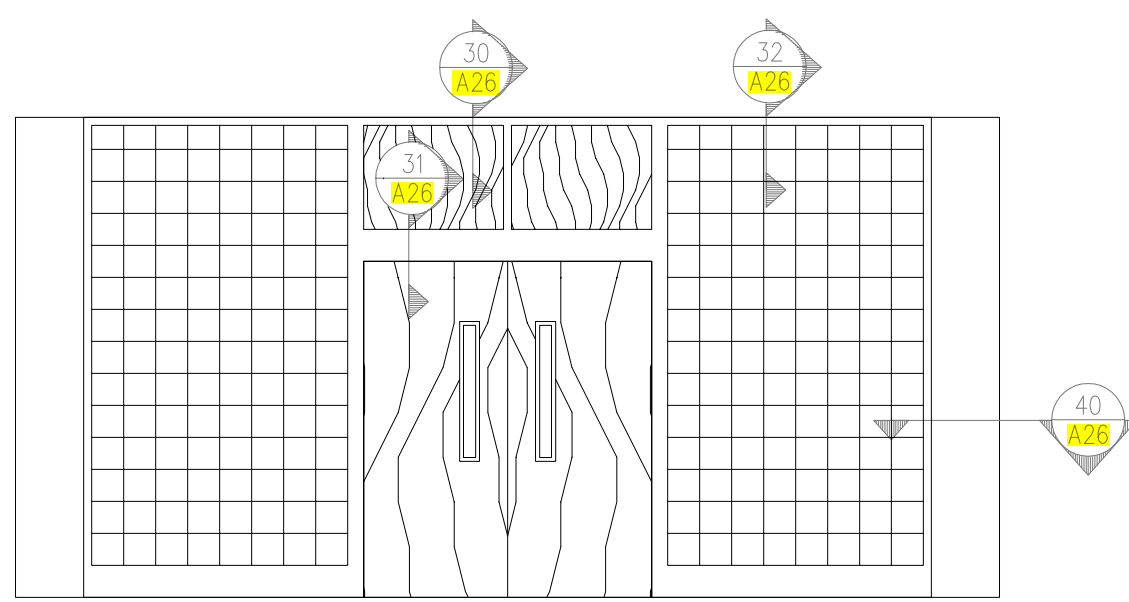
2 VESTIBULE SOUTH ELEVATION

A26 1/4" = 1'-0"



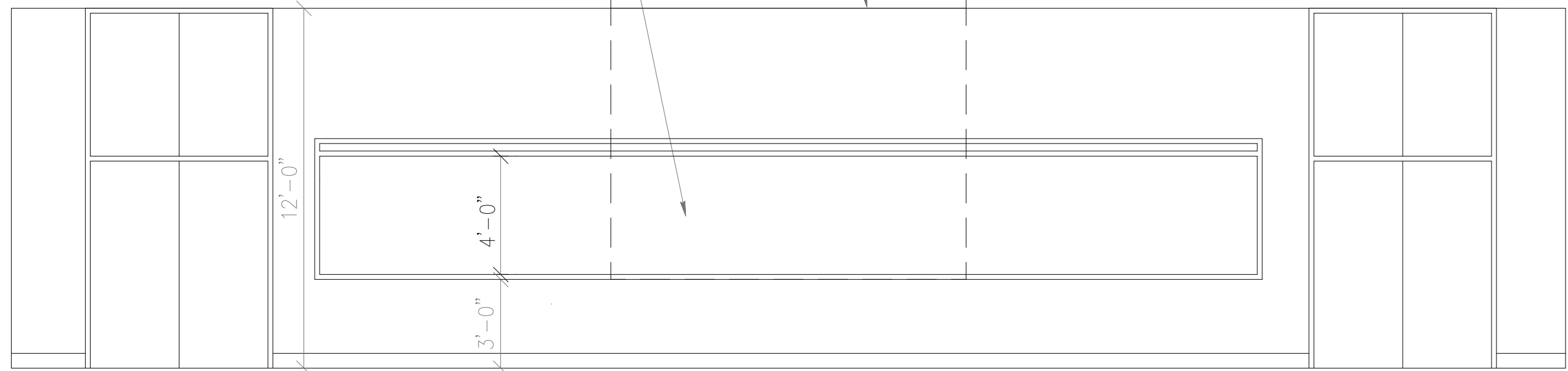
3 LOBBY NORTH ELEVATION

A26 1/4" = 1'-0"



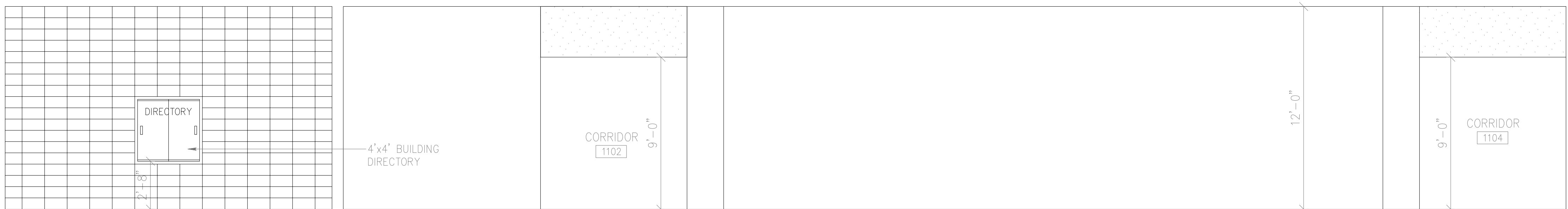
4 LOBBY SOUTH ELEVATION

A26 1/4" = 1'-0"



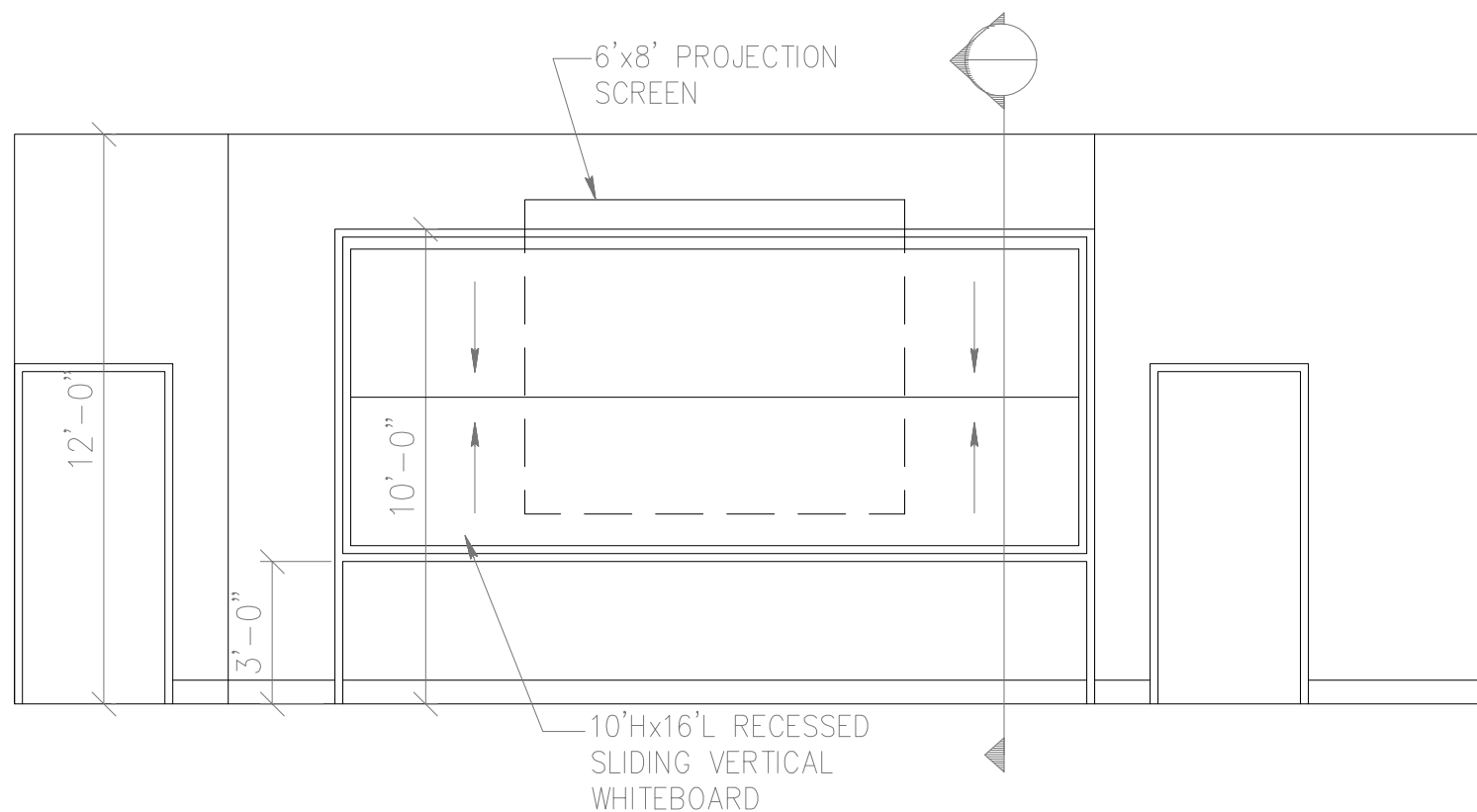
7 LECTURE 1173 WEST ELEVATION

A26 1/4" = 1'-0"



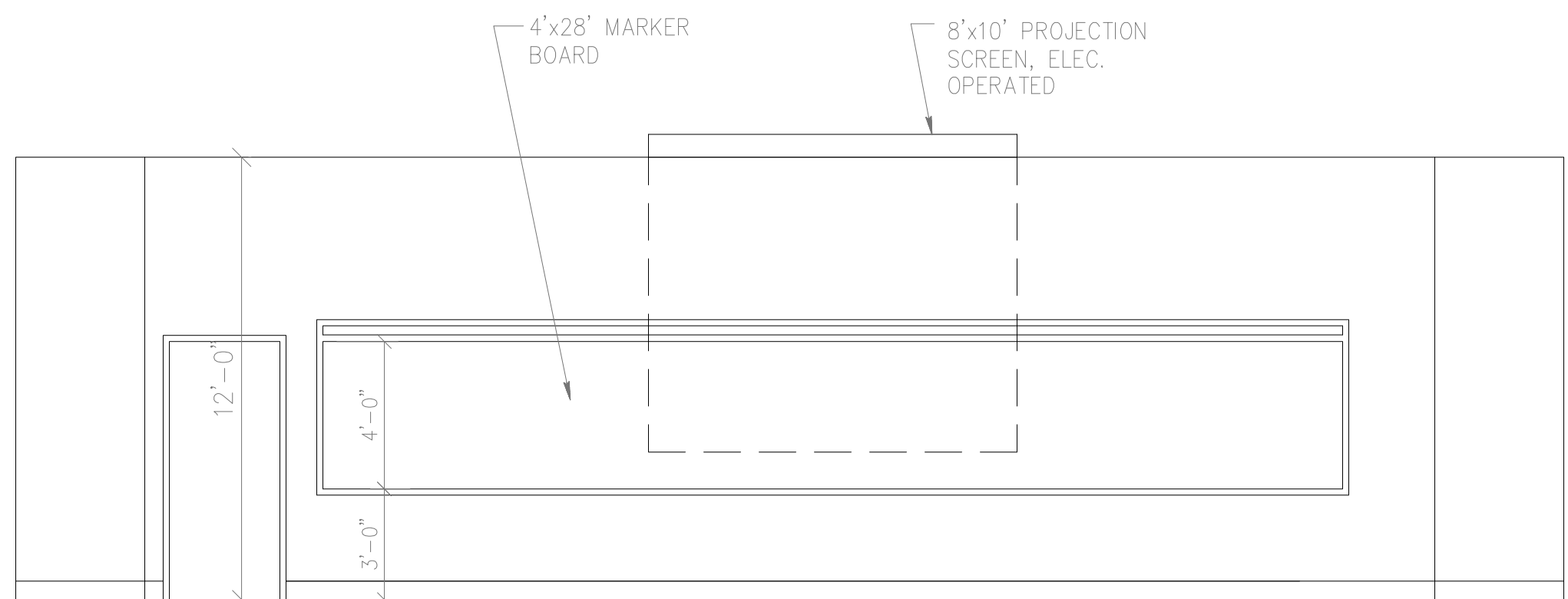
1 LOBBY-VESTIBULE WEST ELEVATION

A26 1/4" = 1'-0"



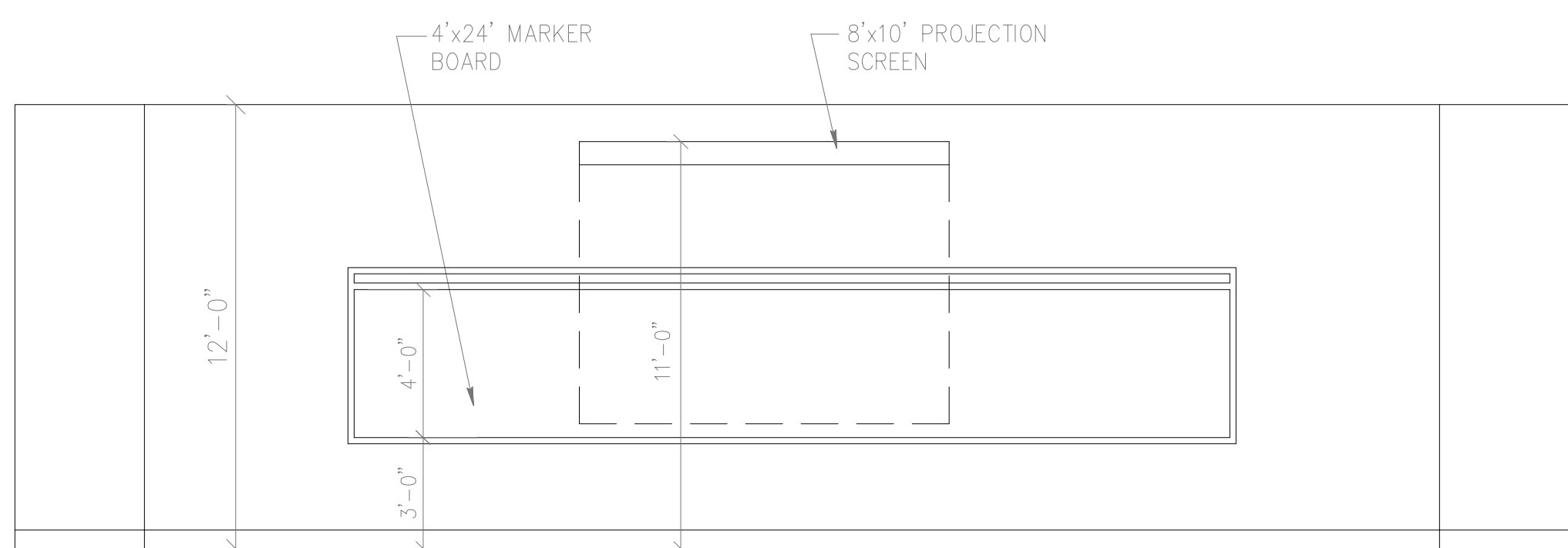
8 BRIEF ROOM 1232 EAST ELEVATION

A26 1/4" = 1'-0"



9 LECTURE 2072 & 2112 ELEVATIONS

A26 1/4" = 1'-0" (LECTURE 2112 OPP. HAND)



10 LECTURE 1103 WEST ELEVATION

A26 1/4" = 1'-0"



11 CORRIDOR 2151 ELEVATIONS

A29 1/4" = 1'-0"

DRAWING REVISIONS:		
NO.	DATE	REMARKS

DATE:	5/16/94
PROJECT#:	9305
DESIGNED BY:	W.G.F.
DRAWN BY:	C.J.S.
CHECKED BY:	T.W.L.
CHECKED BY:	